

# NEW STRIP CENTER DEVELOPMENT - FOR LEASE

## 1510 East 63rd Street, Chicago

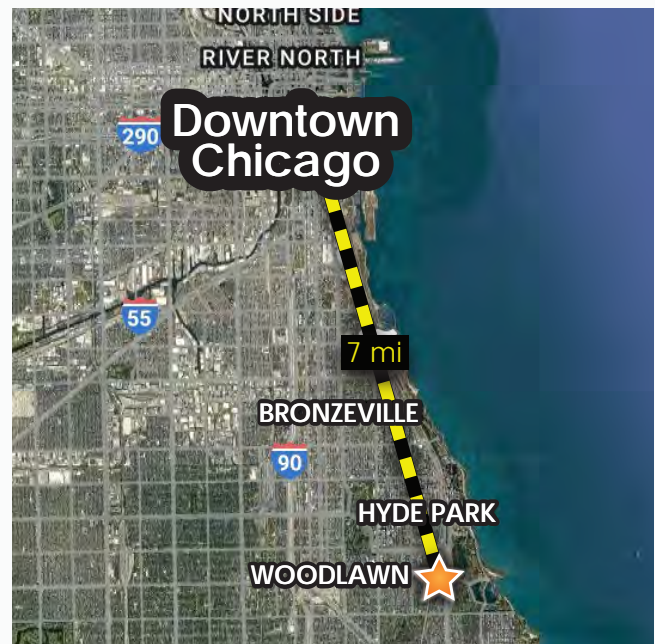


## HIGHLIGHTS

- Proposed Starbucks Strip Center Development
- Heart of Woodlawn & Jackson Park trade area
- Steps away from the Obama Presidential Center (19.3-acre site in Jackson Park)

The complex is estimated to generate 700,000 annual visitors, a long-term economic impact of more than \$3 billion, and more than 5,000 direct, indirect, and induced jobs.

- 5160 SF (Divisible)





# NEW STRIP CENTER DEVELOPMENT - FOR LEASE

## 1510 East 63rd Street, Chicago



### DEMOGRAPHICS

	0.25 Mile	0.5 Mile	1 Mile
	2,128	5,842	33,346
Median 	\$34,953	\$43,521	\$57,106
	1,058	2,675	15,423

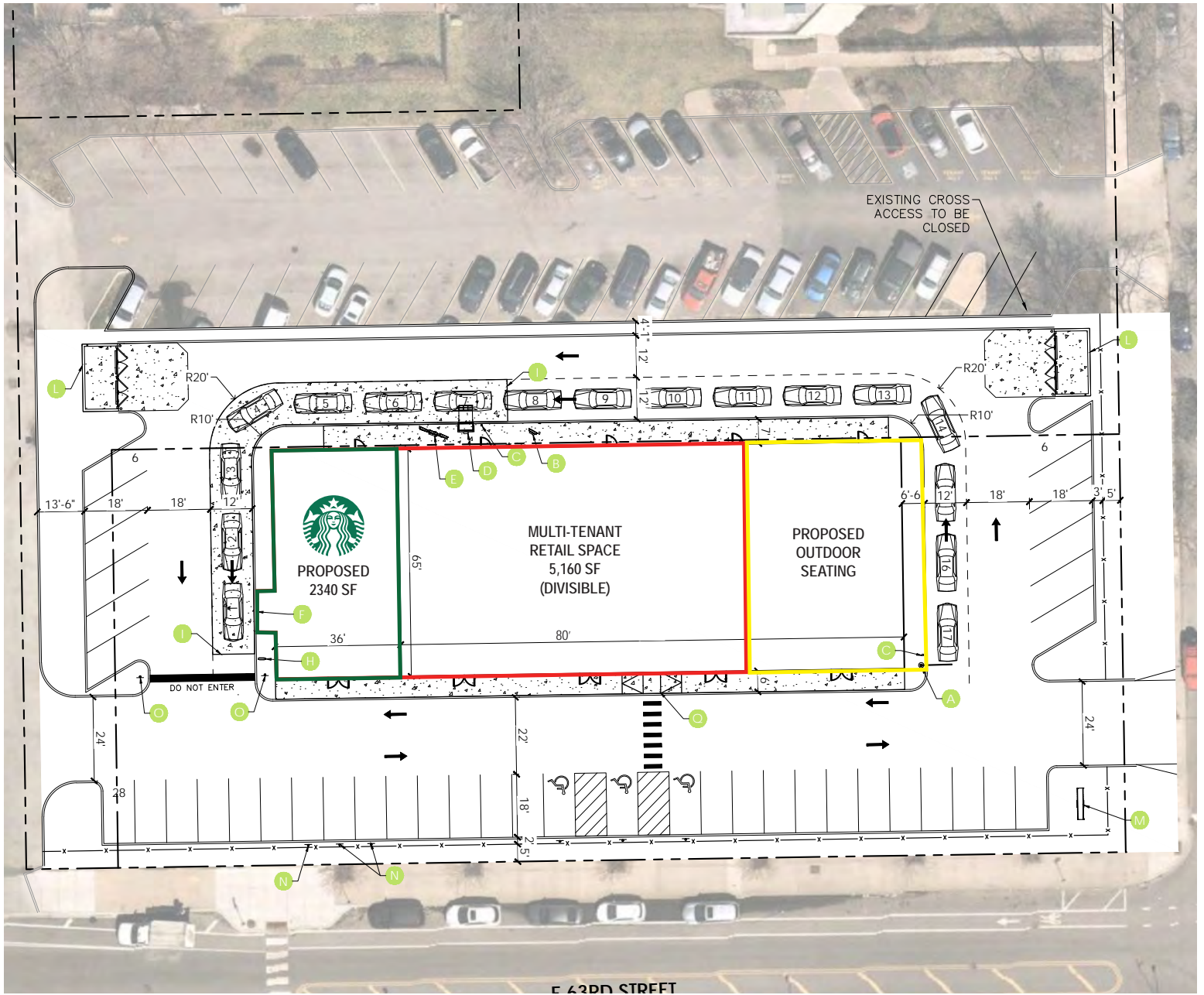
### TRAFFIC COUNTS

E 63rd St. 7,364 VPD  
 S Stony Island Ave. 12,710 VPD  
 S Cornell Dr. 22,488 VPD



# NEW STRIP CENTER DEVELOPMENT - FOR LEASE

## 1510 East 63rd Street, Chicago



## PROPOSED SITE PLAN



Todd J. Cabanban  
Managing Broker | 312.371.4494 | todd@crmcr.com

Cameron Boyce  
Associate Broker | 260.415.6050 | cameron@crmcr.com