

AVAILABLE




6400 95th St, Chicago Ridge, IL 60415



HIGHLIGHTS

- Located on the NW corner of heavily trafficked 95th (55,311 VPD) & Ridgeland Ave (22,738 VPD).
- Excellent exposure across from Chicago Ridge Mall
- Minutes from I294
- Building is appx 3,385 sf, lot size is 18,676 sf
- Zoned C-2
- 40 total parking spots

DEMOGRAPHICS

	.25 Mile	.5 Mile	1.5 Mile
	894	4,322	43,434
Median 	\$79,578	\$69,378	\$65,976
	308	1,497	15,648



TRAFFIC COUNT:
95th - 55,311 VPD

Shadow anchored to national tenants such as:



And so many more!

Jackie Salman Vice President | 312.477.0347 | jackie@crmcr.com

©2022 CR&M Commercial Realty. All rights reserved. All information contained herein is from sources deemed reliable; however, no representation or warranty is made to the accuracy thereof.

AVAILABLE

6400 95th St, Chicago Ridge, IL 60415

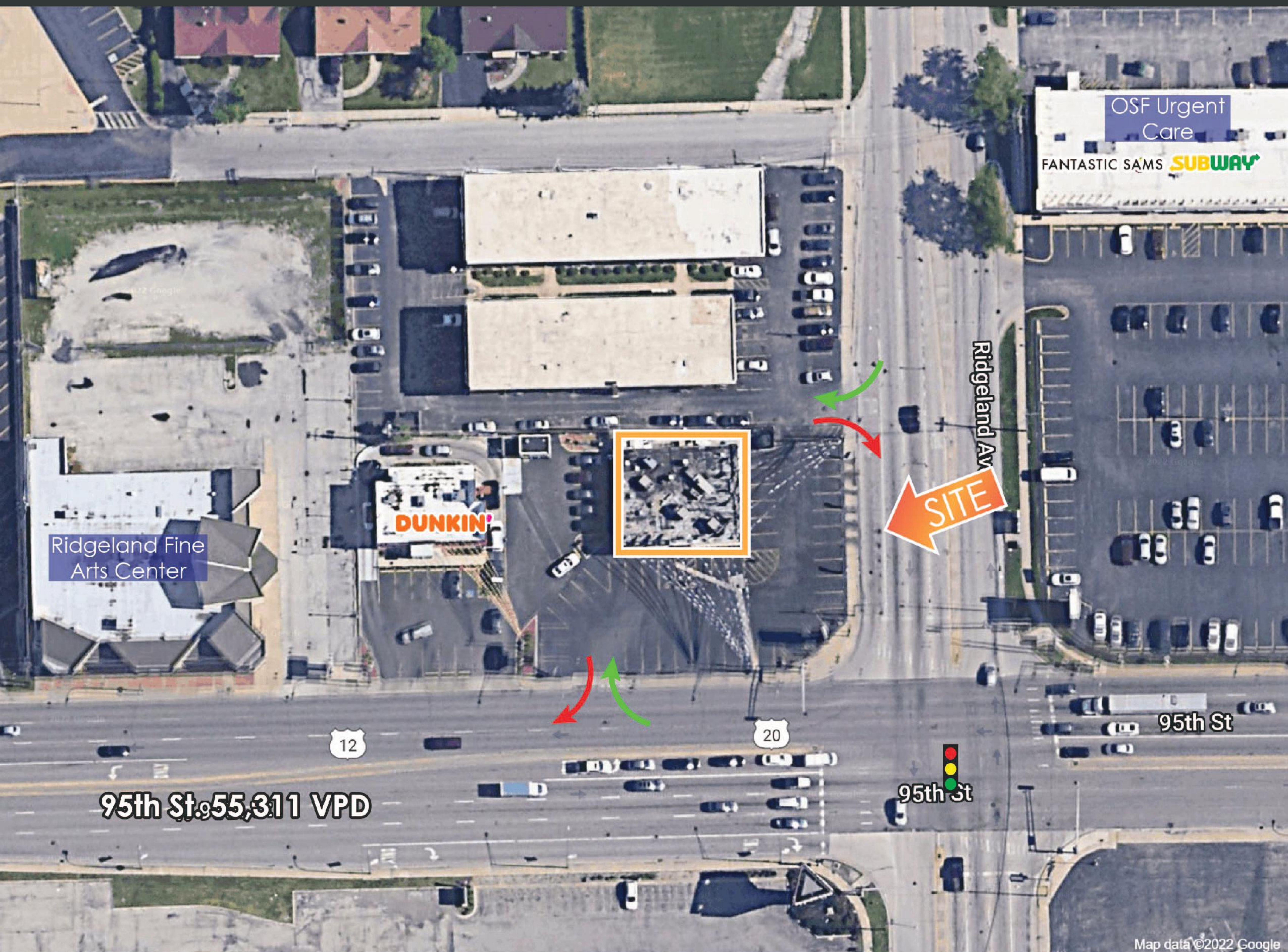


Jackie Salman Vice President | 312.477.0347 | jackie@crmcr.com

©2022 CR&M Commercial Realty. All rights reserved. All information contained herein is from sources deemed reliable; however, no representation or warranty is made to the accuracy thereof.

AVAILABLE

6400 95th St, Chicago Ridge, IL 60415



HIGHLIGHTS

- Located on the NW corner of heavily trafficked 95th (55,311 VPD) & Ridgeland Ave (22,738 VPD).
- Excellent exposure across from Chicago Ridge Mall
- Minutes from I294
- Building is appx 3,385 sf, lot size is 18,676 sf
- Zoned C-2
- 40 total parking spots

Shadow anchored to national tenants such as:

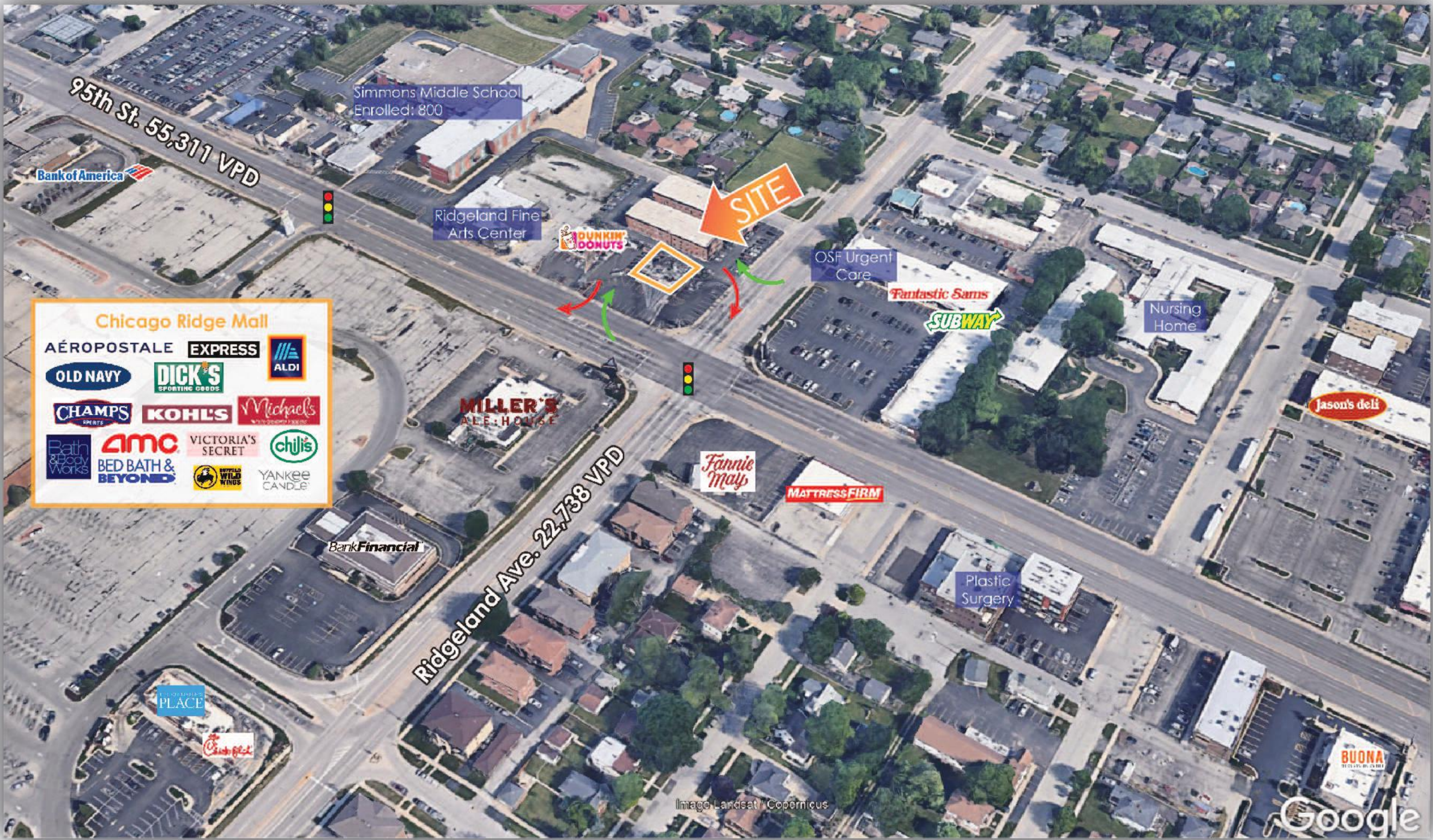


And so many more!

Jackie Salman Vice President | 312.477.0347 | jackie@crmcr.com

©2022 CR&M Commercial Realty. All rights reserved. All information contained herein is from sources deemed reliable; however, no representation or warranty is made to the accuracy thereof.

AVAILABLE
6400 95th St, Chicago Ridge, IL 60415



View facing north



View facing south

Jackie Salman Vice President | 312.477.0347 | jackie@crmcr.com

©2022 CR&M Commercial Realty. All rights reserved. All information contained herein is from sources deemed reliable; however, no representation or warranty is made to the accuracy thereof.

AVAILABLE

6400 95th St, Chicago Ridge, IL 60415



Jackie Salman Vice President | 312.477.0347 | jackie@crmcr.com

©2022 CR&M Commercial Realty. All rights reserved. All information contained herein is from sources deemed reliable; however, no representation or warranty is made to the accuracy thereof.